

SR-L700 MK2
SR-L500 MK2

JAN CODE : 4996476000933

JAN CODE : 4996476000940

(To be released in June)

electrostatic earspeaker

The MK2 models have adopted the cable-exchangeable structure as well as the case holder made from aluminum aiming at user-friendliness and wearing comfort when listening to music.

● Exchangeable cable structure

The exchangeable cable structure of recent trend for high-quality headphone has been employed. This enables the prospective correspondence to a high-definition cable, and the easy maintenance to sudden disconnection, thus improving the user-friendliness of earspeaker.

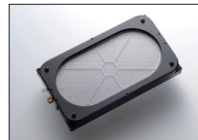
The same 6-strand parallel wide low-capacity cable of 6N(99.9999%) OFC and silver-plated annealed copper wire as in the SR-009S top model is attached to the SR-L700MK2. The cable realizes the assured signal transmission that does not lose the freshness of sound. To the SR-L500MK2 the parallel 6-strand low-capacity HiFC* wide cable is supplied as an accessory. This copper conductor with very small quantity of titanium added features not only superior transmission characteristic, but also excels in softening effect for easy handling.



SR-L700 MK2



SR-L500 MK2



MLER
Same as upper model electrodes (SR-L700 MK2)



New Case Holder



Terminal Part

● Case holder made from aluminum

The change of material has enabled the mechanism design with more high flexibility. In the MK2 models, changing the case holder design from conventional linear style into moderate curve form produces the effect that ear pads fit more naturally on both-sides-of-the-head part. Moreover, the curve form gives high rigidity and prevents from generating unnecessary distortion or twist at the time of wearing, resulting in the great improvement of fit feeling. In an open-air type earspeaker, the degree rise of adhesion at the time of wearing greatly contributes to the improvement of low-frequency reproduction.

<SR-L700 MK2>

- Fixed electrode: MLER (Multi Layer Electrodes)
- Attached cable conductor: 6N(99.9999%)OFC + silver plated annealed copper wire
- Ear pad: genuine sheep leather (skin touching portion), artificial leather (surrounding portion)
- Weight: 371g、508g (including cable)

<SR-L500 MK2>

- Fixed electrode: high precision etched electrode
- Attached cable conductor: HiFC*
- Ear pad: artificial leather (skin touching portion and surrounding portion)
- Weight: 351g、479g (including cable)

<SR-L700 MK2/SR-L500 MK2 in common>

- Type: push-pull electrostatic sound element, open-air type enclosure
- Sound element shape: oval
- Frequency response: 7 - 41,000Hz
- Electrostatic capacitance: 110pF
- Impedance: 145k Ω
- Sound pressure sensitivity: 101dB
- Bias voltage: 580V DC
- Cable: parallel 6-strand, low-capacity wide cable
- Cable length: 2.5m full length

*Specifications are subject to change without notice for improvement. *Use in combination with STAX driver unit.

*HiFC is registered trademark of Hitachi metal company.